

산업용 연속원심분리기
Disc Type

DHC series

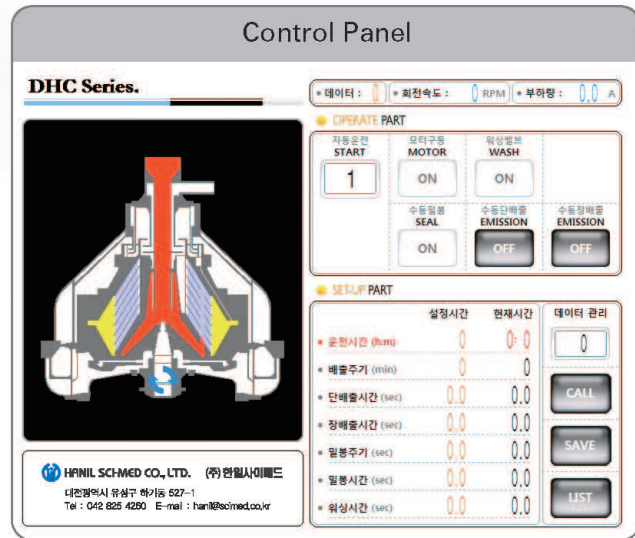


■ 제품응용분야 (Applications)

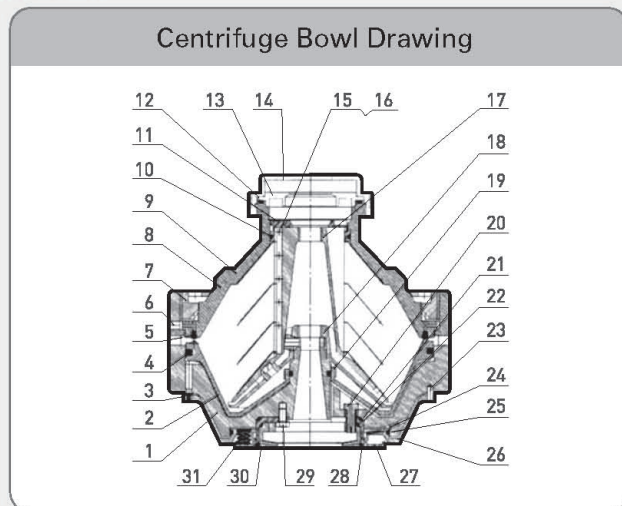
- 유제품분리기 : 우유탈지 혹은 우유를 맑고 깨끗하게 할 때 사용(고체 불순물 제거).
- 광물유분리기 : 연유, 등유, 윤활유와 변압기기름 등 광물유에서 수분제거와 기기불순물제거에 사용하며 유탁액 유사물질 분리에도 사용.
- 식물유분리기 : 식물유의 가공정제에 사용.
- 동물유분리기 : 육류 가공 중에서 동물유지 정제, 혹은 수산물 가공 중에서 어류의 농축분리에 사용.
- 효소분리기 : 효소의 농축에 사용하며 노즐방식으로 침전물을 제거에 사용.
- 녹말분리기 : 녹말에서 단백질을 제거와 녹말의 농축에 사용하며 노즐방식으로 침전물을 제거에 사용.
- 양모지분리기 : 모방업종에서 양모세척수로부터 양모지 추출에 사용하며 노즐방식으로 침전물을 제거에 사용.
- 제약용접식분리기 : 제약업종에서 항생제, 비타민 추출에 사용하며 제약과 화학공업생산에서의 액체-액체-고체 3상 혼합물 분리에도 사용.
- 맥주 분리기 : 맥주, 맥아즙과 기타 음료의 정제에 사용.
- 라텍스분리기 : 고무나무 유탁액의 농축과 라텍스중의 불순물 제거에 사용.
- 페인트분리기 : 도료중의 불순물을 분리하고 도료의 질량을 높이는데 사용.

■ 제품사양 (Specification)

Model	DHCSM-250	DHCSM-400	DHCSM-500
Speed	7,302rpm	7,069rpm	6,626rpm
Capacity	200~2000 L/h	500~3000 L/h	800~5000 L/h
Bowl Volume	8L	14L	23L
Inner diameter of the bowl	270mm	360mm	470mm
Dimension	950x950x1300	1500x1100x1500	1772x1473x1920
Weight	550Kg	810Kg	1600Kg
Power(Electric)	380V / 60Hz / 3Φ		



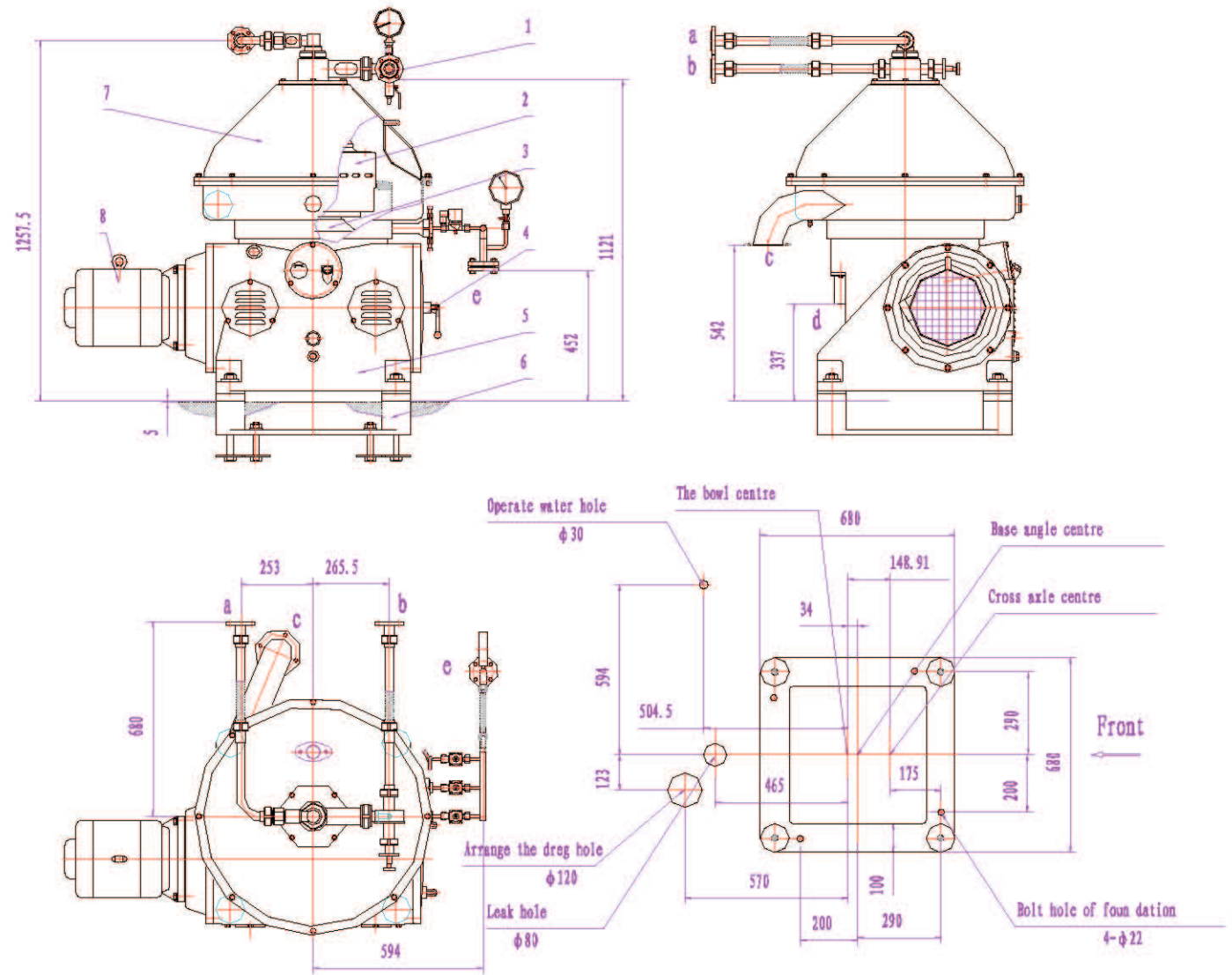
■ Bowl



No.	name	Qty.	specification
1	Bowl Body	1	
2	Slipper Piston	1	
3	Seal Gasket	3	
4	Seal Ring	1	Φ265 X 251 X 6
5	Seal Ring	1	Φ360 X 336 X 12
6	Position	1	
7	Big Check Ring	1	
8	Bowl Cover	1	

No.	name	Qty.	specification
9	Disk	94	
10	O Seal Ring	1	Φ86 X 3
11	Excessive Sets	1	
12	O Seal Ring	1	Φ108 X 4
13	Down Centripetal Pump Cover	1	
14	Up Centripetal Pump Cover	1	
15	Parallel Key	1	
16	Pin	1	Φ2 X 9
17	Assigning Machine	1	
18	Down Assigning Machine	1	
19	O Seal Ring	1	Φ44 X 4
20	Screw	3	
21	O Seal Ring	1	Φ106 X 3
22	O Seal Ring	1	Φ114 X 4
23	Position Pin	1	Φ6 X 16
24	Pin	1	Φ4 X 10
25	O Seal Ring	1	Φ170 X 3.5
26	Operating Slipper Seat	1	
27	Spring Seat	1	
28	O Seal Ring	1	Φ114 X 4
29	Screw	3	M8 X 15
30	Assign Ring	1	
31	Spring	18	

The appearance of the centrifuge and installation sketch map _____



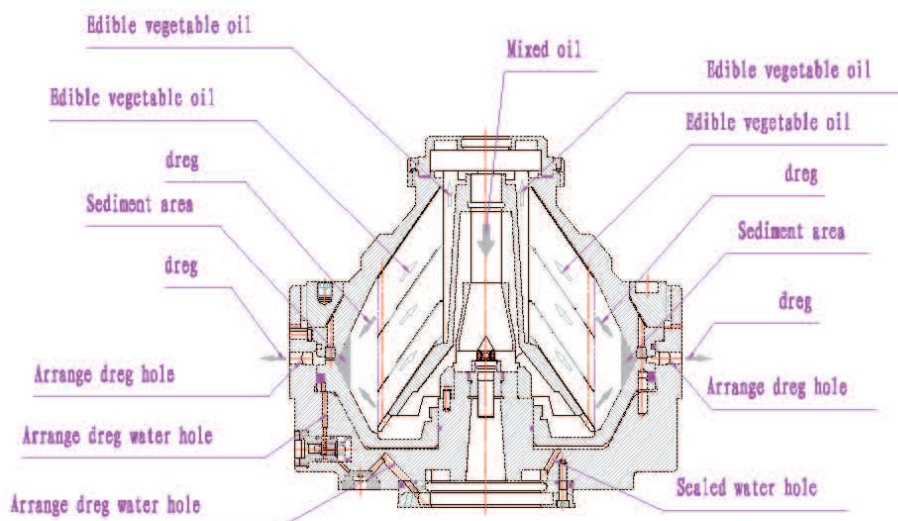
- Nozzle connection table

	Specification	Use
a	DN25 PN1.0	Enter the oil mouth
b	DN25 PN1.0	Produce oil mouth
c	DN100 PN1.0	The soap mouth
d	Φ50	Leak mouth
e	DN20 PN1.0	Operate water

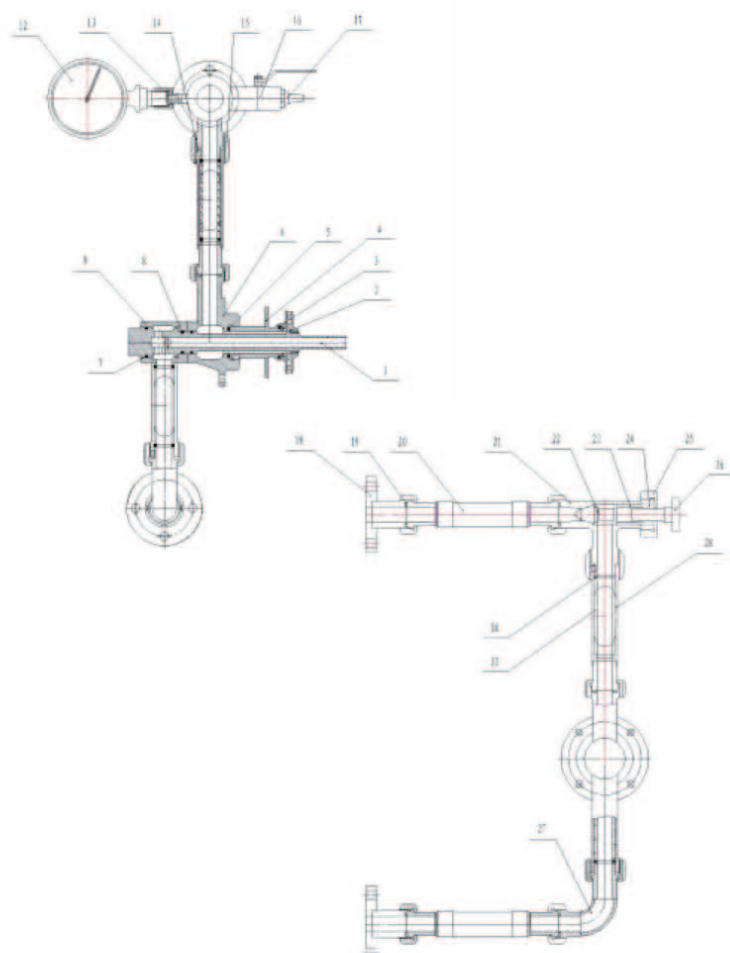
- Parts table

	Part name
1	Feed and discharge device
2	The bowl
3	Vertical shaft
4	Horizontal shaft
5	Fuselage
6	Foundation
7	Hood
8	Motor

Principle picture



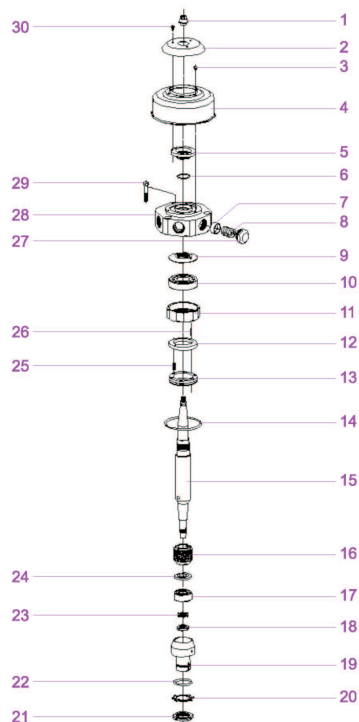
Feed and discharge device



No.	Part description	Qty.	Measurement
1	Feeding pipe	1	
2	Small centripetal pump	1	
3	"O" gasket	1	$\Phi 42 \times \Phi 34 \times 4$
4	Big centripetal pump	1	
5	Gasket	1	$\Phi 40 \times \Phi 32 \times 4$
6	Outlet foundation	1	
7	"O" gasket	3	$\Phi 30 \times \Phi 3.1$
8	"O" gasket	2	$\Phi 40 \times \Phi 3.1$
9	Inlet foundation	1	
10	Gasket	4	$\Phi 27 \times \Phi 20 \times 4$
11	Glass pipe	2	
12	Pressure gauge	1	YTZ-150-MF2
13	Nylon washer	2	
14	Bond	3	$5 \times 5 \times 10$
15	Double head nut	2	
16	Valve	2	DN15
17	Sampling device	2	
18	Inlet and outlet flange	3	
19	Gasket	5	$\Phi 32 \times \Phi 25 \times 5$
20	Metal hose	3	M39 \times 2 \times 200
21	T-piece valve	1	
22	Valve pole	2	
23	Fixation sleeve	2	
24	"V" gasket	2	16×30
25	Nut	2	
26	Handwheel	2	
27	Elbow	1	
28	Outlet pipe	1	

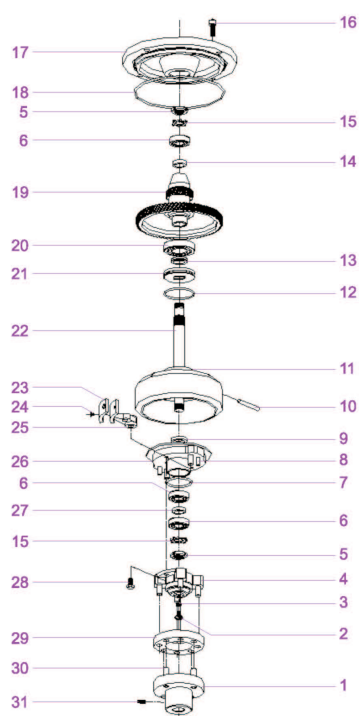
DHC series

Vertical spindle



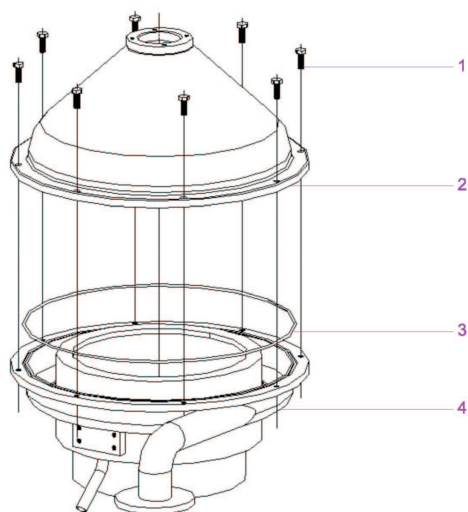
No.	Part description	Qty.	Measurement	No.	Part description	Qty.	Measurement
1	Bolt	1		16	Small gear	1	
2	Small hood	1		17	Bearing	1	SKF2305
3	Semicircle head screw	3	M6 * 6	18	Round nut	1	M25 * 1.5
4	Big hood	1		19	Bearing foundation	1	
5	Lock ring	1		20	Lock washer	1	Φ50
6	"O" gasket	1	Φ40 * 3	21	Round nut	1	M50 * 1.5
7	Spring foundation	6		22	"O" gasket	1	Φ65 * 5.7
8	Spring	6		23	Lock washer	1	Φ25
9	Ring	1		24	Lock washer	1	
10	Bearing	1	SKF6309	25	Spring	6	
11	Bearing jacket	1		26	Pin	2	Φ1.6 * 22
12	Wear-resistant ring	1		27	Screw plug	6	
13	Spring foundation	1		28	Spring cavity	1	
14	"O" gasket	1	Φ120 * 5.7	29	Hex head screw	3	M12 * 60
15	Vertical spindle	1		30	Semicircle head screw	3	M6 * 10

Horizontal spindle



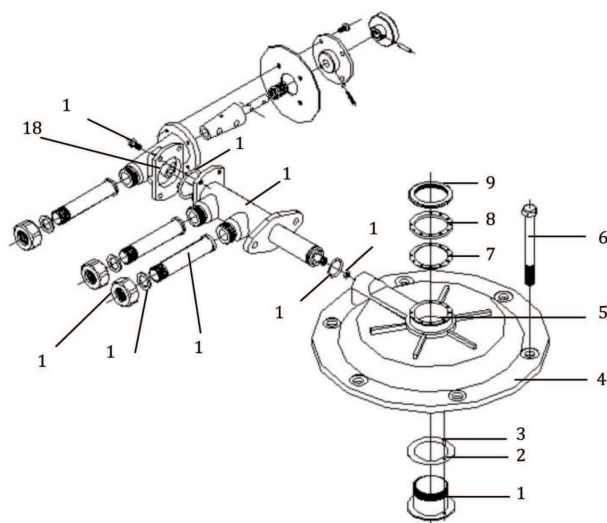
No.	Part description	Qty.	Measurement	No.	Part description	Qty.	Measurement
1	Coupling (I)	1		17	Cover	1	
2	bolt	1		18	"O" gasket	1	Φ236 * 4.6
3	washer	1		19	Copper gear	1	
4	Coupling (II)	1		20	Bearing	1	SKF2305
5	Round nut	2	M250 * 1.5	21	Bearing cover	1	
6	Bearing	3	Φ40 * 3	22	Horizontal spindle	1	
7	"O" gasket	1	Φ60 * 4.6	23	Friction pad	2	
8	Pin	2		24	bolt	4	
9	Gasket	1	Φ40 * Φ30 * 5	25	Clutch	2	
10	Pin	1		26	Clutch wheel	1	
11	Friction wheel	1		27	Sleeve	1	
12	"O" gasket	1	Φ80 * 3.55	28	Hex head screw	2	M10 * 20
13	Seal	1	Φ30 * Φ42 * 7	29	Spring block	1	
14	Adjust sleeve	1		30	Pin	10	
15	Lock washer	1	Φ25	31	Clamp bolt	1	M10 * 30
16	Allen screw	1	M12 * 30				

Hood



No.	Part description	Qty.	Measurement
1	Hex head screw	8	M10 * 30
2	Upper cover	1	
3	"O" gasket	1	$\Phi 468 * 4.6$
4	Below cover	1	

Water hood device



No.	Part description	Qty.	Measurement
1	Inter sleeve	1	
2	Gasket	1	$\Phi 62 * \Phi 44.5 * 0.5$
3	Pin	1	$\Phi 3 * 8$
4	Water hood	1	
5	Pin	2	
6	Hex head screw	3	$\Phi 12 * 110$
7	Gasket	1	$\Phi 57 * \Phi 44.5 * 0.5$
8	Water distributor	1	
9	Round nut	1	
10	Hex head bolt	4	M6 * 12
11	"O" gasket	1	$\Phi 34.5 * 3.55$
12	Operating pipeline		
13	"O" gasket	1	$\Phi 26 * 2.4$
14	"O" gasket	1	$\Phi 10 * 1.8$
15	Tie-in	2	
16	Gasket	2	$\Phi 24 * \Phi 16 * 2$
17	Nut	2	
18	Bearing cover	1	